



## Harwich \$579,000

Live/work, town center: Antique home w/10 seat restaurant, offices. Lease purchase avail.

Nat Santoro 508.240.0334



## East Falmouth \$459,000

Business zoned development w/room for expansion, high traffic count.

Jim Fox 617.529.8616



## Hyannis \$447,000

Existing lodging business and real estate. Licensed for 12 boarders and 3 additional apartments.

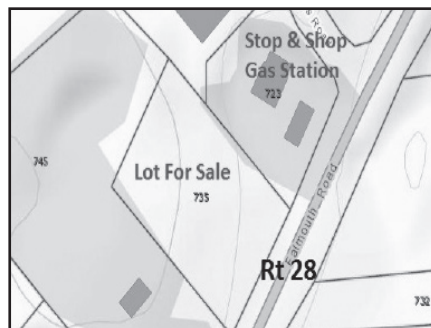
George Gamache 508.735.2672



## Cape Cod \$399,000

Business only: Quality men's clothing store, upscale Cape town. Established, excellent financials.

Nat Santoro 508.240.0334



## Mashpee \$390,000

1.34 acres of land on Route 28, next to Stop & Shop gas station.

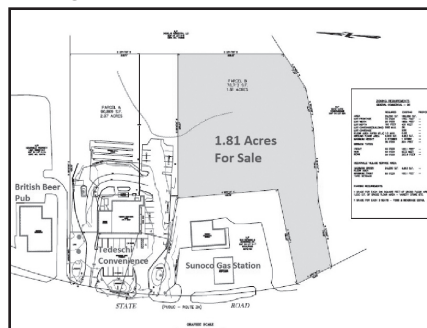
Ben Edgar 508.776.2635



## Bourne \$369,000

High visibility on Rt 28. 1,400 sf Retail/Office Building on 36,123 sf of land.

Ben Edgar 508.776.2635



## Plymouth \$345,000

1.81 acres of General Business Land On Route 3A, just off Exit 2 of Rt 3.

Ben Edgar 508.776.2635



## West Yarmouth \$299,000

High Visibility on Rt 28 4,200 square foot building on 0.58 acres.

Ben Edgar 508.776.2635



## Dennis \$239,000

Great visibility/traffic next to Post Office: 2400 sqft retail/office condo. Owner may help finance.

Nat Santoro 508.240.0334



## Orleans \$214,000

High visibility on way to town - .29 acre limited bus zone w/bldg foot print. Creative financing.

Nat Santoro 508.240.0334



## Orleans \$5,417 NNN

For Lease: Center of town, walk-by traffic, highest visibility. 3320 sqft & 2120 sq ft basement.

Nat Santoro 508.240.0334



## South Yarmouth \$1,065/mo

For Lease in Lighthouse Landing Plaza, 1420 sqft for \$9 per sqft + CAM/priv bath/rear entrance.

Nat Santoro 508.240.0334



## Dennis \$550/mo

For Lease: 945 sq ft of 2nd floor office/professional space in well-known plaza. Call for details.

Sharon Dixon 508.240.0334



## Chatham \$500/mo

For lease. Professional office 161 sq ft \$500/mo w/shared conference rm, reception, kitchen, 2 ba.

Sharon Dixon 508.240.0334



## East Falmouth \$14.50/sf

For Lease | \$14.5/SF/Year | 2,350 SF Last unit available in very busy retail plaza.

Nat Santoro 508.240.0334



## Bourne \$ call

Lease 2,256 sq ft available with Drive-thru, 1/2 mile from Bourne Rotary, 1.89 acres.

George Gamache 508.735.2672