



**Bourne** **\$3,595,000**  
20,000 sf office building on 4 acres, expandable by 10,000 sf, or lease at \$15.50/sq ft NNN.  
Ben Edgar 508.776.2635



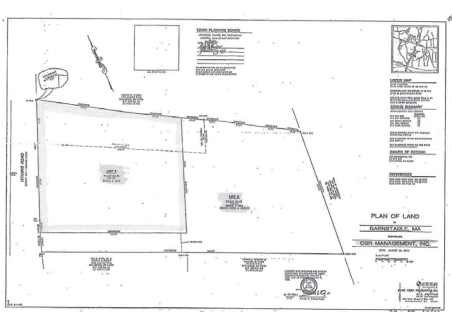
**Plymouth** **\$1,550,000**  
13,200 sq ft Showroom/Warehouse building on 1.1 acres just off Exit 5 of Rt 3.  
Ben Edgar 508.776.2635



**Wareham** **\$1,395,000**  
6,800 sq ft restaurant building, almost turnkey, 206 seats, 1.1 acres at stoplight. or for lease.  
Ben Edgar 508.776.2635



**Falmouth** **\$1,295,000**  
New Price.Mixed use 5 Res units & 6 Office units in the heart of Falmouth.  
Jim Fox 617.529.8616



**Barnstable Village** **\$895,000**  
2 residential acre+ lots on town sewer. Build 2 homes, estate style home or age restricted 40B.  
John Callahan 508.737.1322



**Falmouth** **\$850,000**  
7 lot Approved subdivision Fal Heights, 2 lots waterfront Little Pond.  
Jim Fox 617.529.8616



**Eastham** **\$699,000**  
Sports Bar Route 6: Seats 142, full liquor, town water. Creative financing possible.  
Nat Santoro 508.240.0334



**Plymouth** **\$699,000**  
Manomet, 7.1 acres in retail district. Signage in visible location along Rte 3A.  
Ben Edgar 508.776.2635



**Yarmouth Port** **\$587,000**  
2500 sq ft Auto Business. Equipment included, spray booth, frame machine, 2 post lift, mig welder.  
Sandy Clarke 413.531.4458



**Eastham** **\$549,000**  
Business & Real Estate! Convenience store w/yr round beer/wine + 2nd flr 1 br apartment.  
Nat Santoro 508.240.0334



**Harwich** **\$449,000**  
Medical office, 5 exam rooms, ADA compliant, CH-1 Zoning. Call for details.  
Nat Santoro 508.240.0334



**Orleans** **\$399,000**  
Visibility @Orleans rotary, GB zone fixer/tear down 2520 sq ft/mixed use possible.  
Nat Santoro 508.240.0334



**South Dennis** **\$229,000**  
Office Condo 2490 sqft: 6 offices, conf rm, more Central location/possible lease/purchase.  
Nat Santoro 508.240.0334



**Brewster** **\$49,000**  
BUSINESS ONLY: Distinctive glass/gallery business for sale. RE available for \$459K  
Nat Santoro 508.240.0334



**South Yarmouth** **\$2380/mo NNN**  
For Lease Only: Retail/Office 3173 sq ft, busy strip center, high visibility, flexible.  
Nat Santoro 508.240.0334



**South Yarmouth** **\$1090/mo NNN**  
For Lease Only: Retail 1453 sqft at busy Lighthouse Ldg, high visibility/flexible space.  
Nat Santoro 508.240.0334