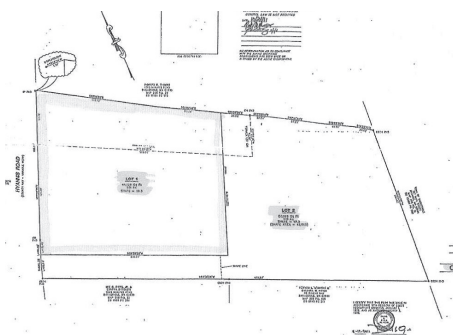
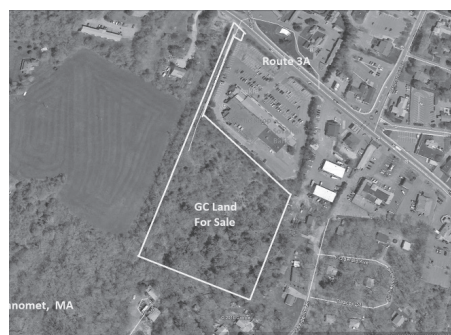




**Wareham** **\$1,395,000**  
6,800 sf restaurant building, almost turnkey, 206 seats, 1.1 ac at stoplight Lease \$8,000/mo NNN.  
Ben Edgar 508.776.2635



**Barnstable Village** **\$895,000**  
6,800 sq ft Restaurant building, almost turnkey, 206 seats, 1.1 acres at stoplight. Or Lease.  
John Callahan 508.737.1322



**Plymouth** **\$699,000**  
Manomet, 7.1 acres in retail district. Signage in visible location along Rte 3A.  
Ben Edgar 508.776.2635



**Eastham** **\$699,000**  
Sports Bar Route 6: Seats 142, full liquor, town water. Creative financing possible.  
Nat Santoro 508.240.0334



**Yarmouth Port** **\$587,000**  
2500 sq ft Auto Business - equipment included, spray booth, frame machine, lift, mig welder.  
Sandy Clarke 413.531.4458



**Brewster** **\$459,000**  
Gallery bldg on 6A: 2,786 sqft 1st fl plus larger w/walkout bsmnt. Business available.  
Nat Santoro 508.240.0334



**Harwich** **\$449,000**  
Medical office, 5 exam rms, ADA compliant, CH-1 Zoning allows many uses. Call for details.  
Nat Santoro 508.240.0334



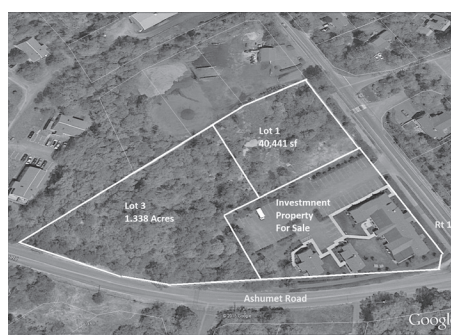
**Hyannis** **\$447,000**  
Existing lodging business and real estate. Licensed for 12 boarders and 3 apartments.  
John Callahan 508.737.1322



**Bourne** **\$429,000**  
4,800 sq ft Condo, access via (3) 14' overhead doors. 2 miles to Bourne Bridge.  
John Callahan 508.737.1322



**Orleans** **\$399,000**  
Visibility @Orleans rotary, GB zone fixer/tear down 2520 sq ft. Mixed use possible.  
Nat Santoro 508.240.0334



**Mashpee** **\$350,000**  
Mashpee Main Street 2 lots of commercial land 40,441-98,738 sq ft.  
Ben Edgar 508.776.2635



**West Dennis** **\$349,900**  
8 unit building some prvt entrances, shared conference, 1 br apartment, creative financing.  
Nat Santoro 508.240.0334



**Bourne** **\$115,000**  
Office Condo, 1260 sq ft, finished with 4 private offices, kitchen & conference room.  
Ben Edgar 508.776.2635



**Brewster** **\$49,000**  
Business Only. Established in the mid 1960's, distinctive glass plates and bowls.  
Nat Santoro 508.240.0334



**Orleans** **\$2,500**  
For Lease: Town Center, walk-by traffic. 1464 sq ft 1st flr/1200 sq ft 2nd, bsmnt.  
Nat Santoro 508.240.0334



**South Yarmouth** **\$1,005**  
For Lease Only. 2 units #12&13/approx 1340 sqft each w/front & back entrances.  
Sharon Dixon 508.240.0334