



Bourne **\$3,595,000**
20,000 sf office building on 4 acres, expandable by 10,000 sf, or lease at \$15.50/sq ft NNN.
Ben Edgar 508.776.2635



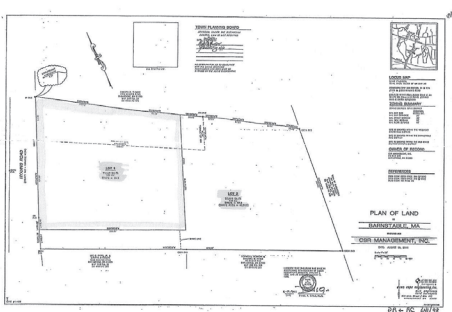
Harwich Port **\$1,450,000**
Mixed Use: Two 2 br apts, 1 studio, retail/display space, wkshop, 3 garages, plans for 2 add'l apts.
Bill Lean 508.240.0334



Wareham **\$1,395,000**
6,800 sq ft restaurant building, almost turnkey, 206 seats, 1.1 acres at stoplight. or for lease.
Ben Edgar 508.776.2635



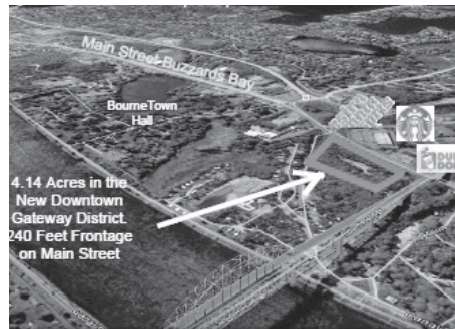
Falmouth **\$1,295,000**
New Price. Mixed use 5 Res units & 6 Office units in the heart of Falmouth.
Jim Fox 617.529.8616



Barnstable Village **\$895,000**
2 residential acre+ lots on town sewer. Build 2 homes, estate style home or age restricted 40B.
John Callahan 508.737.1322



Falmouth **\$850,000**
7 lot Approved subdivision Fal Heights, 2 lots waterfront Little Pond.
Jim Fox 617.529.8616



Buzzards Bay **\$799,000**
New Downtown Gateway District 4 + acre site. Mixed use zoning Town sewer.
Jim Fox 617.529.8616



North Eastham **\$699,000**
Sports Bar Route 6: Seats 142, full liquor, town water. Creative financing possible.
Nat Santoro 508.240.0334



Plymouth **\$699,000**
Manomet, 7.1 acres in retail district. Signage in visible location along Rte 3A.
Nat Santoro 508.776.2635



Yarmouth Port **\$587,000**
2500 sq ft Auto Business. Equipment included, spray booth, frame machine, 2 post lift, mig welder.
Sandy Clarke 413.531.4458



North Eastham **\$549,000**
Business & Real Estate! Convenience store w/yr round beer/wine + 2nd flr 3 br apartment.
Nat Santoro 508.240.0334



Harwich **\$449,000**
Medical office, 5 exam rooms, ADA compliant, CH-1 Zoning. Call for details.
Nat Santoro 508.240.0334



Orleans **\$399,000**
Visibility @Orleans rotary, GB zone fixer/tear down 2520 sq ft/mixed use possible.
Nat Santoro 508.240.0334



South Dennis **\$229,000**
Office Condo 2490 sqft: 6 offices, conf rm, more Central location/possible lease/purchase.
Nat Santoro 508.240.0334



South Yarmouth **\$2380/mo NNN**
For Lease Only: Retail/Office 3173 sq ft, busy strip center, high visibility, flexible.
Nat Santoro 508.240.0334



South Yarmouth **\$1090/mo NNN**
For Lease Only: Retail 1453 sqft at busy Lighthouse Ldg, high visibility/flexible space.
Nat Santoro 508.240.0334