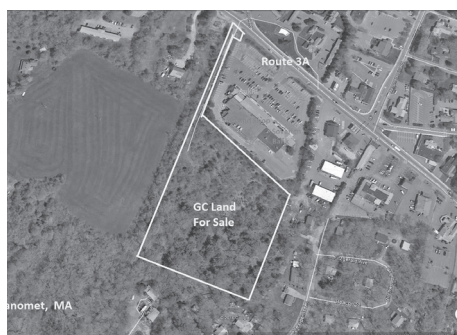




Wareham **\$1,395,000**
6,800 sf restaurant building, almost turnkey, 206 seats, 1.1 ac at stoplight Lease \$8,000/mo NNN.
Ben Edgar 508.776.2635



Plymouth **\$699,000**
Manomet, 7.1 acres in retail district. Signage in visible location along Rte 3A.
Ben Edgar 508.776.2635



Yarmouth Port **\$587,000**
2500 sq ft Auto Business - equipment included, spray booth, frame machine, lift, mig welder.
Sandy Clarke 413.531.4458



North Eastham **\$569,000**
Business & RE: Convenience store w/yr-round beer/wine w/2nd flr 1 br apartment.
Nat Santoro 508.240.0334



Wellfleet **\$459,000**
Mixed use: 3,528 sq ft office building with 2 br apt. Possible lease w/option/part owner financing.
Nat Santoro 508.240.0334



Brewster **\$459,000**
Gallery bldg on 6A: 2,786 sqft 1st fl plus larger w/walkout bsmnt. Business available.
Nat Santoro 508.240.0334



Harwich **\$449,000**
Medical office, 5 exam rms, ADA compliant, CH-1 Zoning allows many uses. Call for details.
Nat Santoro 508.240.0334



Hyannis **\$447,000**
Existing lodging business and real estate. Licensed for 12 boarders and 3 apartments.
John Callahan 508.737.1322



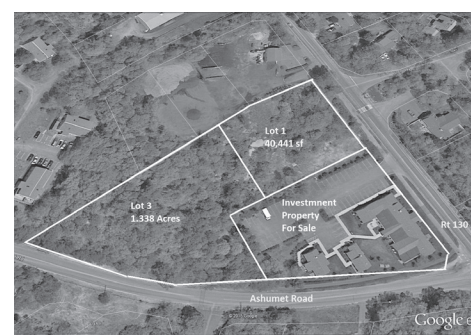
Bourne **\$429,000**
4,800 sq ft Condo, access via (3) 14' overhead doors. 2 miles to Bourne Bridge.
John Callahan 508.737.1322



Orleans **\$399,000**
Visibility @Orleans rotary, GB zone fixer/tear down 2520 sq ft. Mixed use possible.
Nat Santoro 508.240.0334



Bourne **\$369,000**
High visibility on Rt 28, 1,400 sq ft Retail/Office Building on 36,123 sq ft of land.
Ben Edgar 508.776.2635



Mashpee **\$350,000**
Mashpee Main Street 2 lots of commercial land 40,441-98,738 sq ft.
Ben Edgar 508.776.2635



West Dennis **\$349,900**
8 unit building some prvt entrances, shared conference, 1 br apartment, creative financing.
Nat Santoro 508.240.0334



Bourne **\$115,000**
Office Condo, 1260 sq ft, finished with 4 private offices, kitchen & conference room.
Ben Edgar 508.776.2635



Orleans **\$2,500**
For Lease: Town Center, walk-by traffic. 1464 sq ft 1st flr/1200 sq ft 2nd, bsmnt.
Nat Santoro 508.240.0334



South Yarmouth **\$2,010 NNN**
For Lease only: Retail/Office: 3173 sq ft at busy strip center. High visibility/flexibility.
Nat Santoro 508.240.0334